



TSX-V:HPY

HAPPY CREEK
MINERALS LTD.

Corporate Update
April 2022

Forward Looking Statement

Neither the TSX Venture Exchange nor its Regulation Services Provider (as that term is defined in the policies of the TSX Venture Exchange) accepts responsibility for the adequacy or accuracy of this presentation.

This presentation may contain statements and projections such as plans, forecasts, prices, objectives, targets, resources, profits, value, scale, and others that are forward looking and subject to risks and uncertainties more fully described in the Company's Prospectus, Financial Statements and Public Filings located on SEDAR. \$ are U.S. currency unless otherwise noted.

Resources reported herein conform to NI43-101 with a report filed on SEDAR and can also be viewed on the Company's website. Readers are cautioned that the quantity and grade of reported Inferred resource estimations are conceptual in nature, and there has been insufficient exploration to define these Inferred Resources as an Indicated or Measured Resource. It is uncertain if further exploration will result in upgrading them to an Indicated or Measured Resource category. Mineral Resources that are not Mineral Reserves do not have demonstrated economic viability.

The Qualified Person has not completed sufficient work to verify the historic information on the Property or adjacent properties, particularly in regard to historical drill results. However, the Qualified Person believes that drilling and analytical results were completed to industry standard practices. The information provides an indication of the exploration potential of the Property but may not be representative of expected results. Grab and chip samples are selective by nature and the values reported may not be representative of the entire mineralized zone. Results or information from an adjacent property does not infer or indicate similar results or information will or does occur on the subject property.

"Diversified Metals Exploration" and the Company's logo and images are copyright of Happy Creek Minerals Ltd. All Rights Reserved.

Michael S. Cathro P.Geo, Director, is a Qualified Person as defined under NI-43-101 has approved the technical content of this presentation.



Outline



- The Company
- Our Properties
- New Highland Valley Targets
- 2022 Plans
- Summary
- Contact



Happy Creek Minerals Ltd.

- Making new discoveries and building resources in proximity to infrastructure on its 100%-owned, district-scale projects
- Multiple opportunities to create value
- Focus on copper, precious-metals and tungsten in low-risk BC
- Has an exceptional team with solid expertise and depth in the mineral resource sector and capital markets
- Is committed to responsible mineral resource development. Our priority is to build and sustain mutually beneficial relationships with Indigenous Communities in the territories in which we explore



Happy Creek Team

Many decades successful experience:

- ✓ Discovery and project development
- ✓ BC geology and mineral deposits
- ✓ Permitting
- ✓ Mine operations
- ✓ Community and Indigenous relations
- ✓ Financing and capital markets
- ✓ Public company governance

Walter Segsworth, P.Eng, Non-Executive Chair

Peter Hughes, President, CEO, & Director

David Blann, P.Eng, Director

Mike Cathro, P.Geo, Director

Rodger Gray, Director

Sarah Weber, P.Geo, Director

Richard Lee, CMA, CFO

Kathy Love, Corporate Secretary

Charlie Greig, P.Geo., Technical Advisor



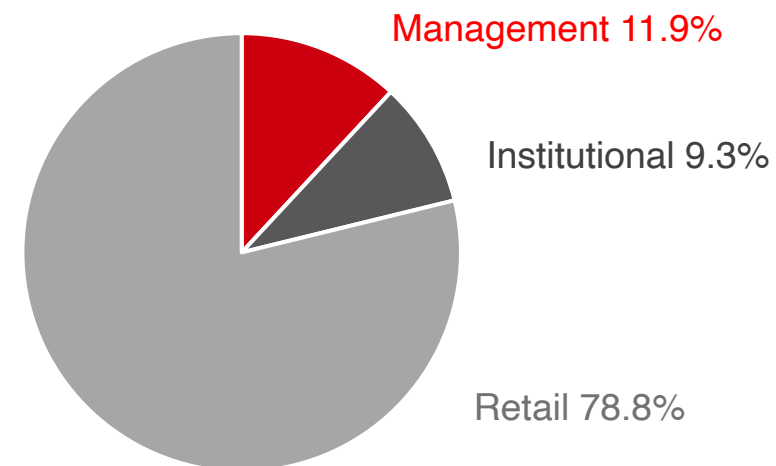
Capital Structure

Aligned with Shareholders



Shares Issued	124.2 m
Warrants	18.4 m
Options	10.7 m
Fully Diluted Shares	153.3 m
Recent Share Price	CAD \$0.035
Market Cap	CAD \$4.35 m
TSX:V ticker	HPY

Share Ownership



Institutional:
Resource Capital Funds IV

Committed to Community Engagement, Safety and Environmental Protection



- Communicate early and address concerns in planning
- Employment, training and contracting opportunities
- Building partnerships



Progressive reclamation



Reclaimed 2015 drill trail



Tracked drill minimizes trails and tree-cutting

- Heritage field reconnaissance surveys
- Archaeological Chance Find procedure
- Minimize disturbance and water use
- Reclaim disturbance ASAP
- Several multi-year permits in place

Happy Creek's History of Significant Discoveries

Advanced from grassroots prospecting to drill discovery and resource estimation, since 2006

Fox Tungsten District - three high-grade deposits advanced to 43-101 resource stage and still open for expansion, plus four other drilled prospects and numerous showings



Original "Happy Creek" discovery at Fox Tungsten

Zone 1 and 2 Copper Deposits – two buried deposits found by drilling in the Highland Valley



Highland Valley Drilling, fall 2020

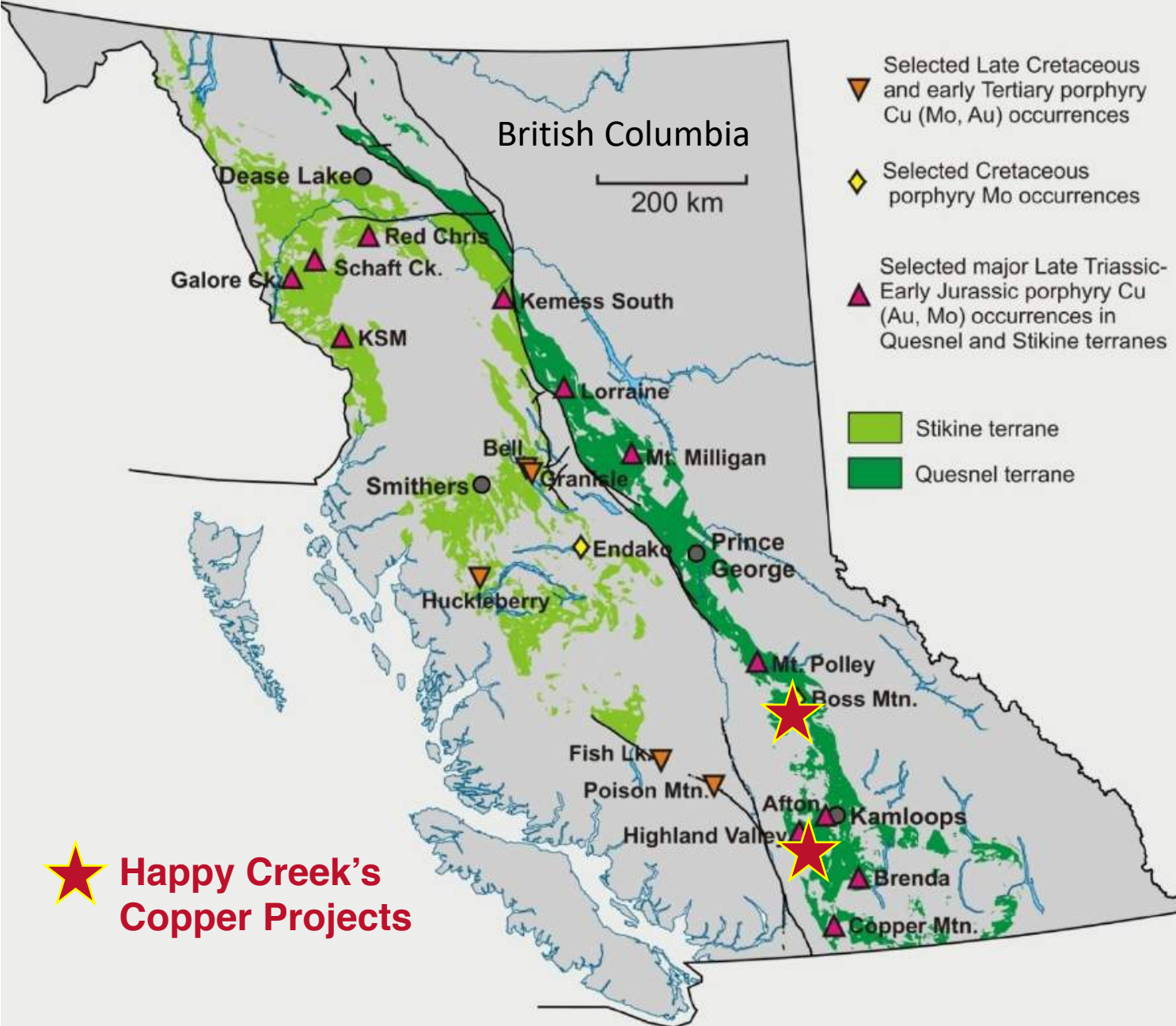
And more to come!



British Columbia: A Tier 1 Copper Jurisdiction

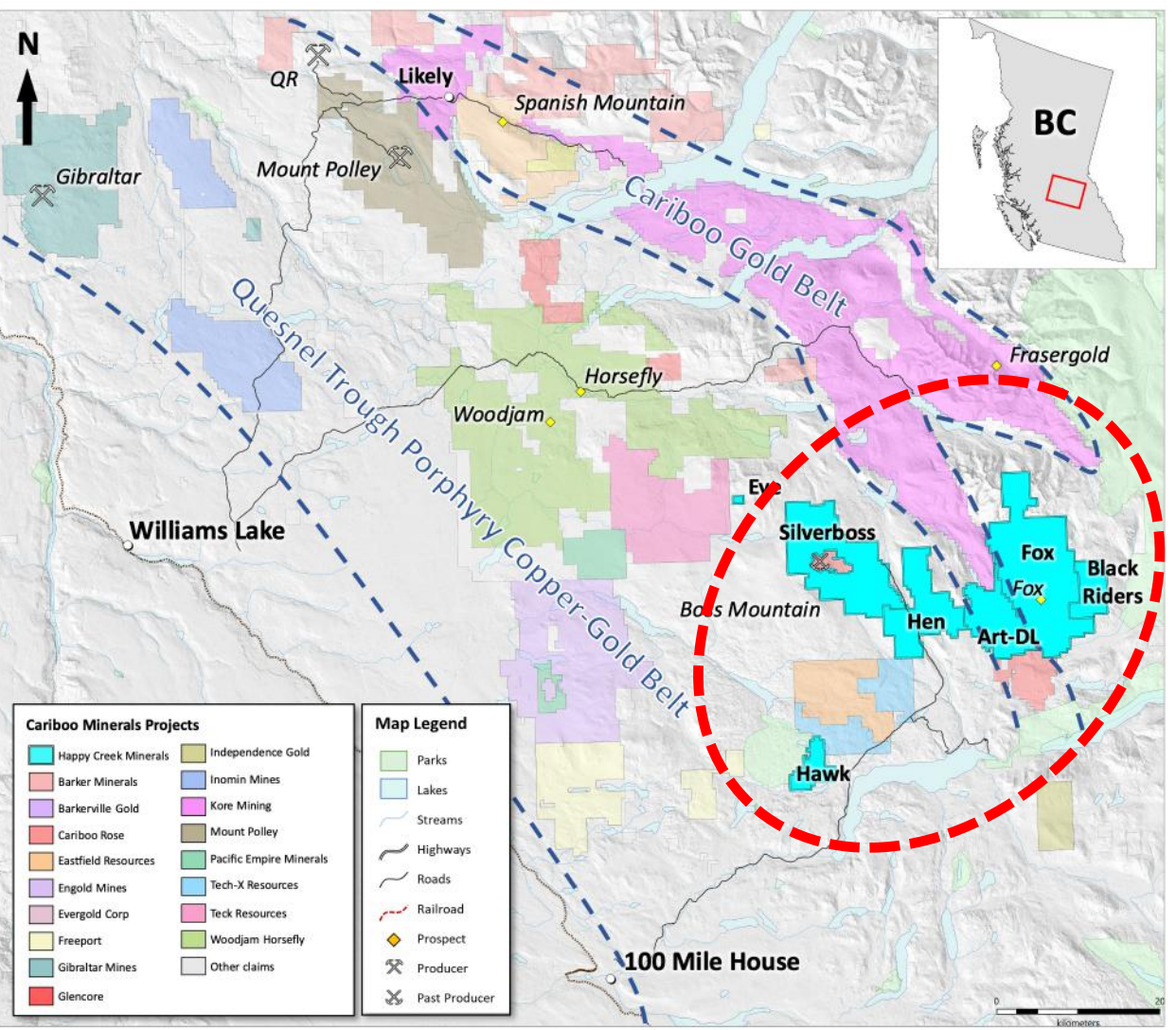


- Accounted for 54% of Canada's copper production in 2020
- Some of the world's largest copper(+gold) projects
- Most deposits are in Late Triassic – Early Jurassic intrusions of Stikine and Quesnel Terrane
- Our projects are in the heart of southern BC mining districts



Cariboo Projects

- 100%-owned properties transect the Cariboo Gold Belt which has 11.5 million ounces Au in reserve/resource (Barkerville, Spanish Mountain, Frasersgold)
- The properties also include part of the Quesnel Trough porphyry belt (Gibraltar, Mt. Polley, Woodjam, Boss Mountain etc.)
- Rail, grid power, highways, resource roads
- Happy Creek's Cariboo projects include:
 - Fox Tungsten
 - Silverboss porphyry Cu-Mo-Au and Au-Ag
 - Hen-Art-DL porphyry/skarn Au-Cu and orogenic Au
 - Hawk porphyry Cu-Au-Ag
 - Black Riders Ni



Fox Tungsten Project

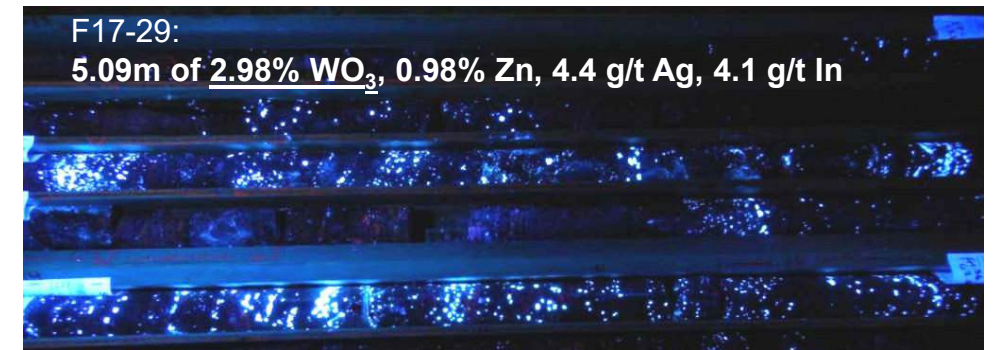
Company Controls Entire District with World-Class Grade



- Road-accessible near 100 Mile House
- One of the world's highest grade tungsten resources:
 - 582,400 t @ 0.826% WO_3 (indicated)
 - 565,400 t @ 1.231% WO_3 (inferred) *
- 10 km-long district; skarn geology similar to Cantung
- There are no primary producers in North America and >80% of global tungsten supply is from China
- Tungsten is deemed a **strategic & critical** element in Canada, USA, and EU due to importance & supply risk
- Next steps: permit 5 km trail & more resource drilling; Target is 3.5 million tonnes @ 1% WO_3



Drilling at Fox - RC Zone



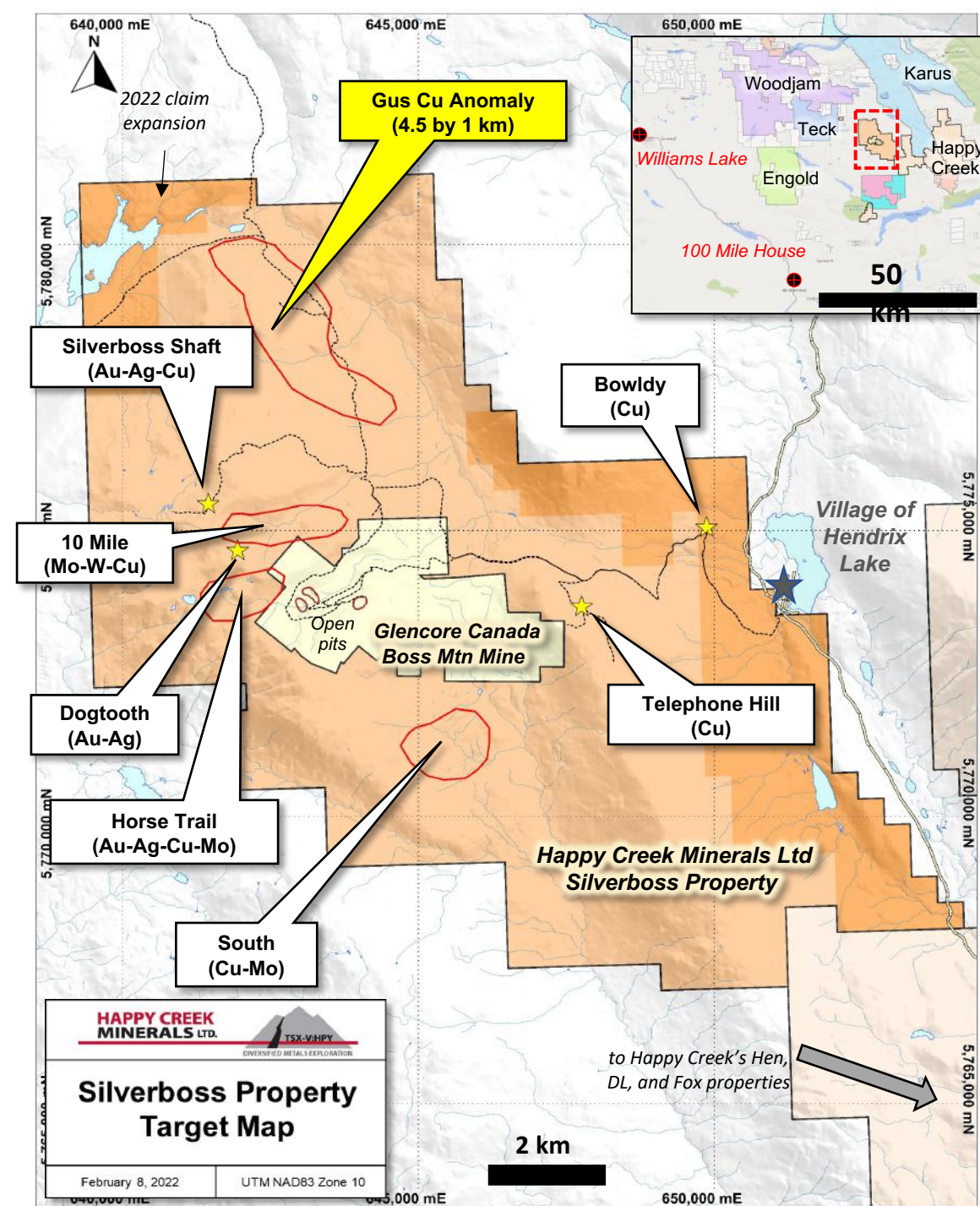
Fox - BN Zone high-grade scheelite in drill core (under UV light)

Silverboss Project

Surrounds Glencore's Boss Mountain Moly Mine (closed)



- 80 km by road from 100 Mile House
- Resource roads; grid power; history of mining
- Host is Early Jurassic Takomakane batholith
- Several drill-ready, high-grade gold-silver vein and bulk-tonnage copper-moly targets
- 2021 work at **Gus** extended copper-in-soil anomaly to 4.5 km long with locally anomalous values of silver, palladium & nickel
- Claim package recently expanded to 11,107 Ha
- Only 5 drill holes (1971) on Silverboss property

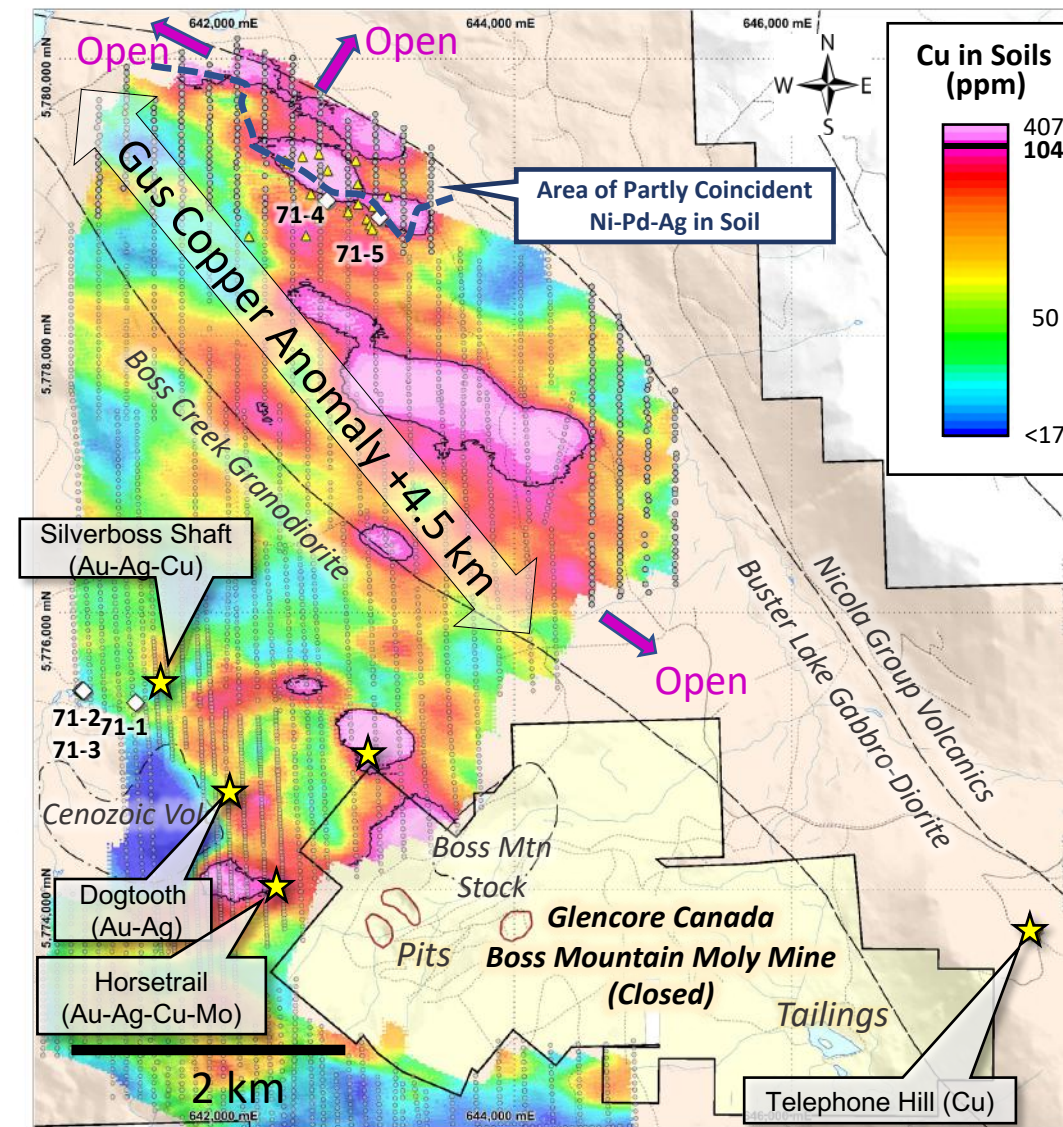


Silverboss - Gus Copper

Bulk-Tonnage Target of Porphyry or Magmatic Style?



- Very large Gus copper-in-soil anomaly expanded to 4.5 km in length in 2021, and is still open
- Newly recognized anomalous values for palladium (to 22 ppb), silver (to 4.9 ppm) and nickel (to 137 ppm)
- Hosted by Early Jurassic gabbro (Takomkane batholith)
- Tested by two 300-m-long holes in 1971 (core split but no assays reported; logs noted “*considerable chalcopyrite*”)
- 1971 core was located in 2021; seven random intervals from top boxes returned up to 651 ppm copper & 39 ppb palladium
- 2022 plans: more soils, geology, prospecting



 HAPPY CREEK MINERALS LTD. <small>TSX-V:HPY</small> <small>DIVERSIFIED METALS EXPLORATION</small>	
February 12 th , 2022	Silverboss Property
British Columbia, CA	Gus Target
UTM NAD83 Zone 10	Cu-in-soil Geochemistry

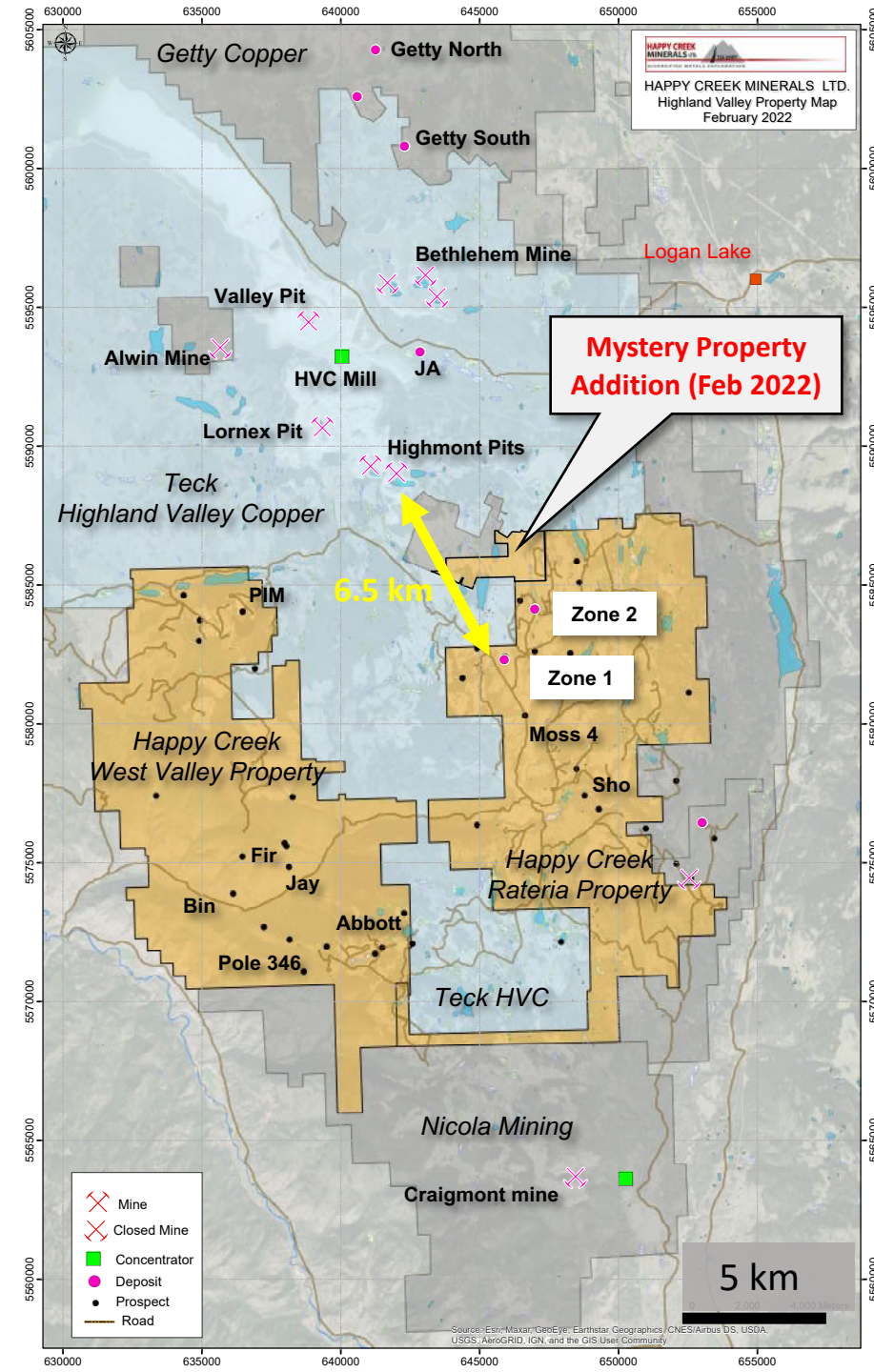
- 2021 soil sample site
- 2006-2011 soil sample site
- ◇ 1971 drill collar
- ★ Prospect
- ▲ Historic chalcopyrite occurrence at Gus target

Highland Valley Project

In Canada's Most Prolific Copper Mining District

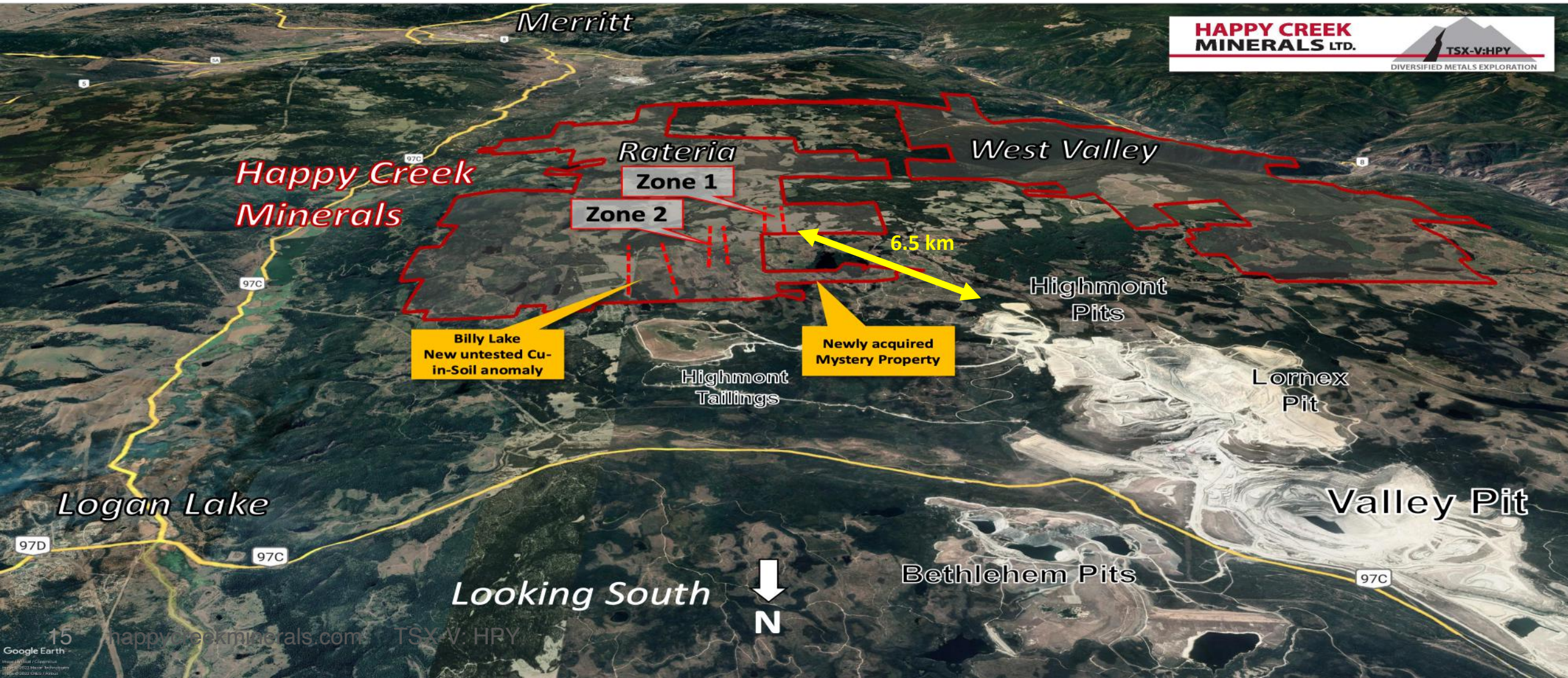


- 24,000 hectares next to Teck's HVC mine
- Happy Creek's property consolidation took +15 years; latest addition is Mystery property (February 2022)
- Two partially drilled deposits at Zone 1 and 2, only 6.5 km south of active Highmont pit, plus 25 prospects
- Dry upland plateau with extensive infrastructure including roads, powerlines and nearby rail, pipelines and highways
- 3-hour drive to Vancouver
- Supportive communities with 60 years of mining history
- We hold multi-year permits for >100 drill sites



Happy Creek's Highland Valley Project

Upland Plateau with Extensive Industrial Logging, Grid Power and Road Access



Our Target is a Giant Porphyry Copper Deposit



- Teck's adjoining Highland Valley Copper mine is the largest base-metal mine in Canada with 60 years of mining, and +2 billion tonnes of production from 7 pits
- Low-grade; large throughput; low-strip ratio; good metallurgy; clean concentrate
- Excellent infrastructure, climate and terrain for large-scale mining

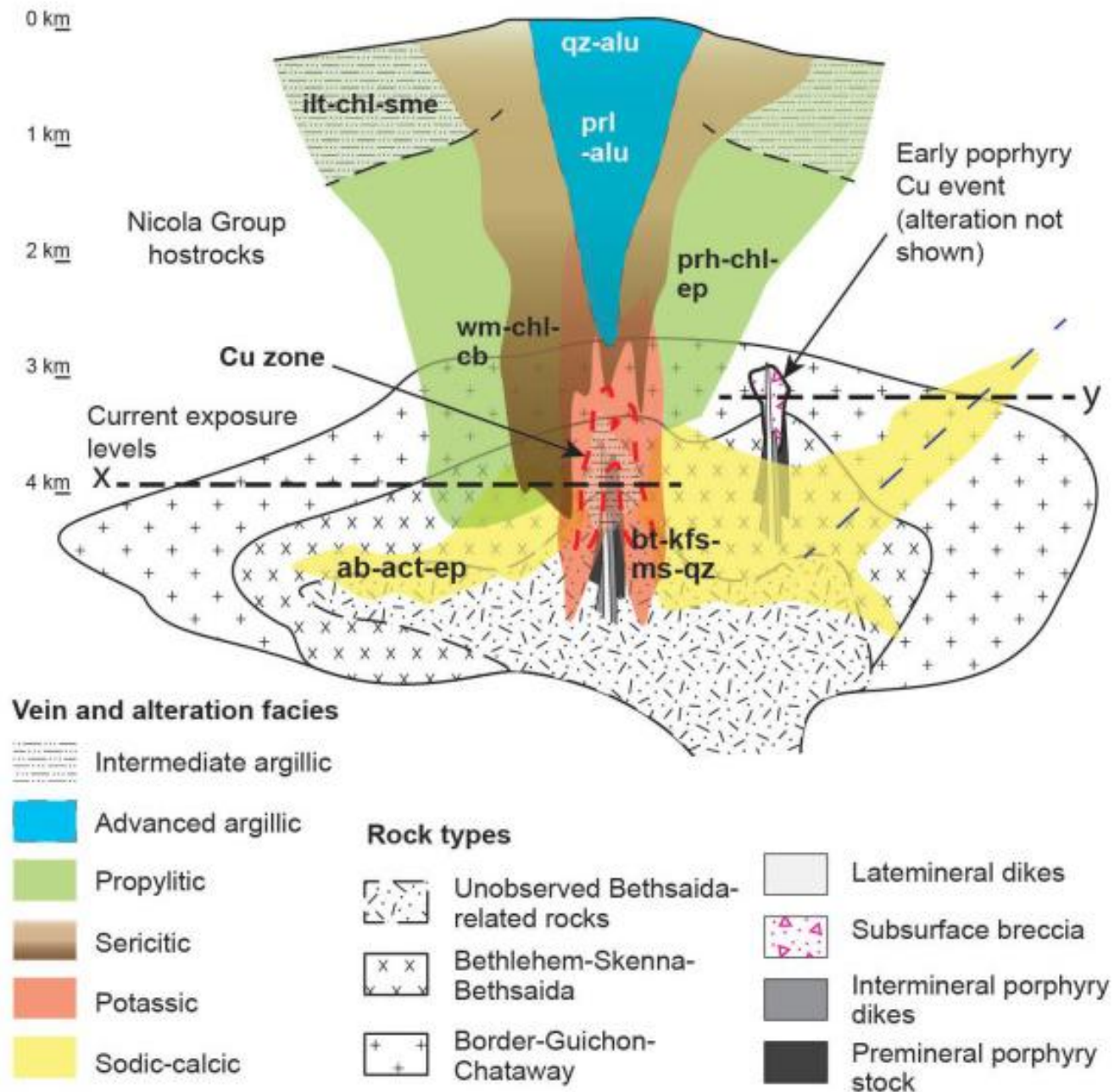
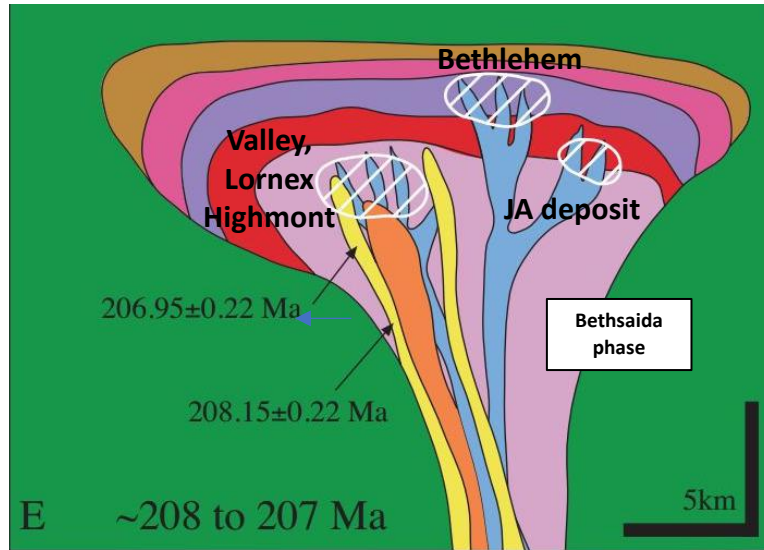
Happy Creek's goal is major discovery that can support a stand-alone operation



Applying the Highland Valley Deposit Model

- Studies by Teck and others continue to refine the model and exploration tools
- Happy Creek is applying these new tools to our large property

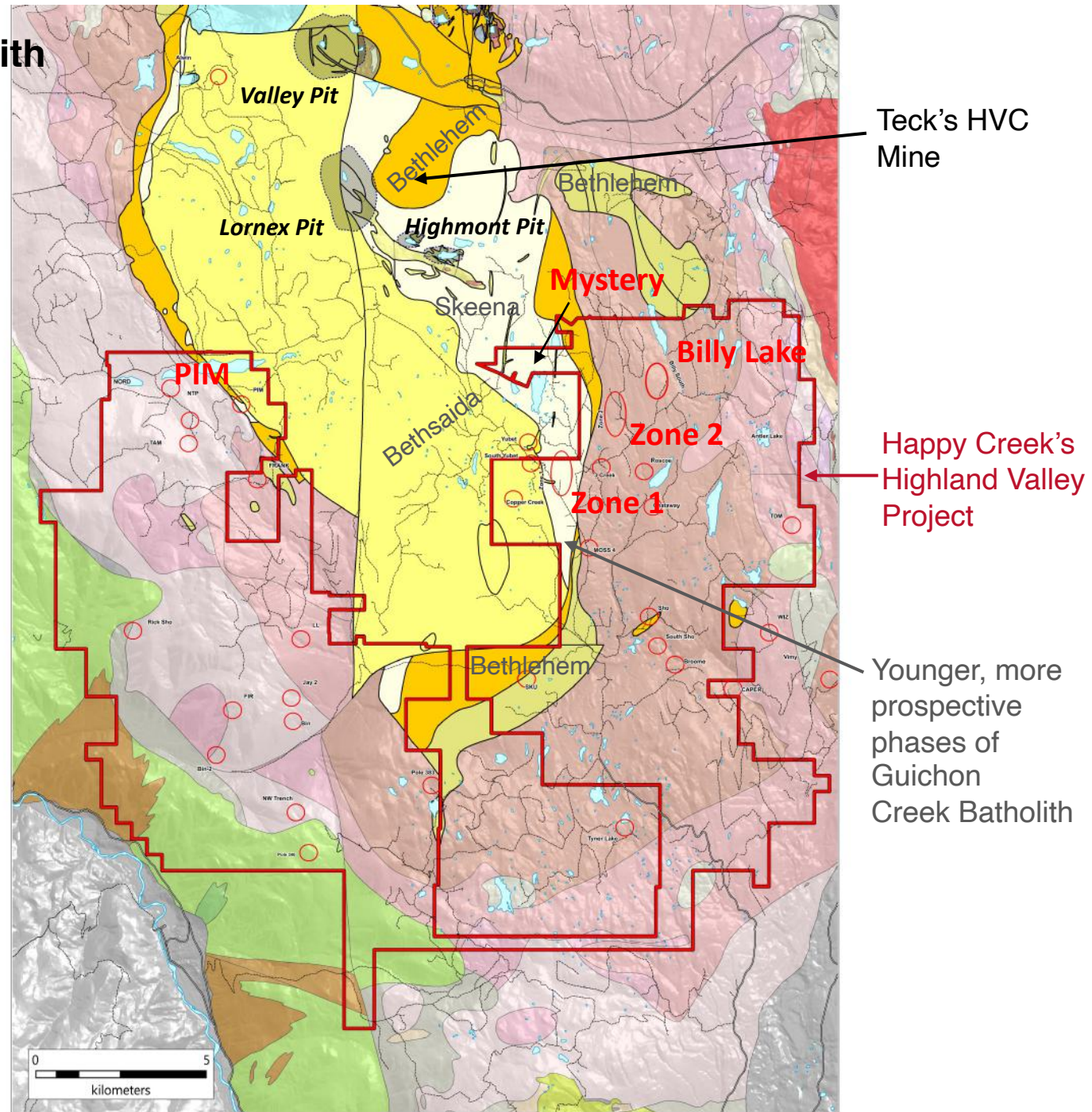
- Nicola
- Border
- Highland Valley
- Bethlehem
- Skeena
- Bethsaida
- Salt and Pepper Bethsaida
- Syn-mineralisation intrusions
- QFPQ Dikes



Highland Valley Geology



- Our Highland Valley Project covers the southern third of the Guichon Creek Batholith
- Key deposits in the district are in the younger, more felsic, interior phases (Bethsaida, Skeena, Bethlehem), which also host our **Zone 1, Zone 2, Pim, Mystery** and other prospects
- Association with faults, dikes and breccia
- Many undrilled targets are prospective for discovery of a major new porphyry copper deposit



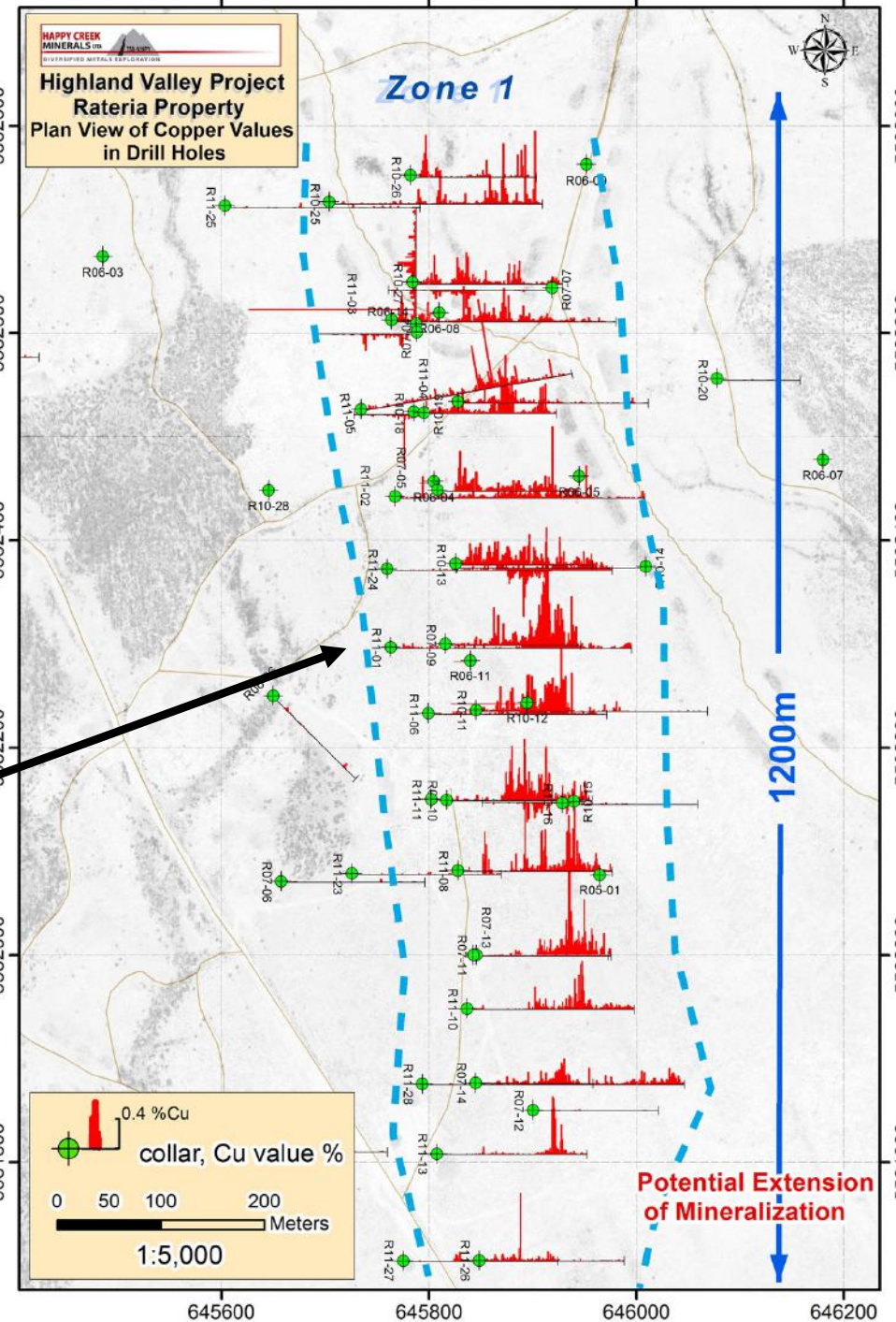
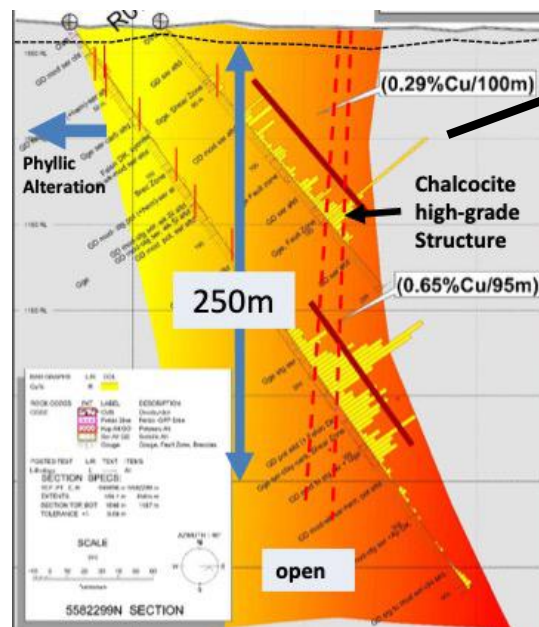
Zone 1 Cu-Ag-Mo Deposit



- 2006 discovery by Happy Creek
- Hosted by Skeena granodiorite cut by feldspar porphyry dikes
- 1200 m long by 50-150 m wide and 250 m deep
- Open to south and to depth
- Mainly chalcocite-bornite with low pyrite
- Metallurgical testing found high recoveries, clean concentrate with 39.6% copper 398.6 g/t silver

Some DDH Highlights			
Hole	Interval (metres)	Cu %	Ag g/t
R07-9	100.0	0.29	1.0
R07-13	189.3	0.22	1.3
R10-12	236.2	0.27	1.0
R10-13	145.3	0.25	1.3
R10-18	250.6	0.18	1.3
R10-25	77.5	0.31	3.3
R11-1	95.0	0.65	3.6
R11-2	157.5	0.19	1.1
R11-3	257.8	0.15	1.3
R11-6	100.0	0.35	2.2
R11-8	250.0	0.25	1.6
R11-11	242.5	0.25	1.6
includes	102.5	0.43	2.9

Cross-Section Looking North



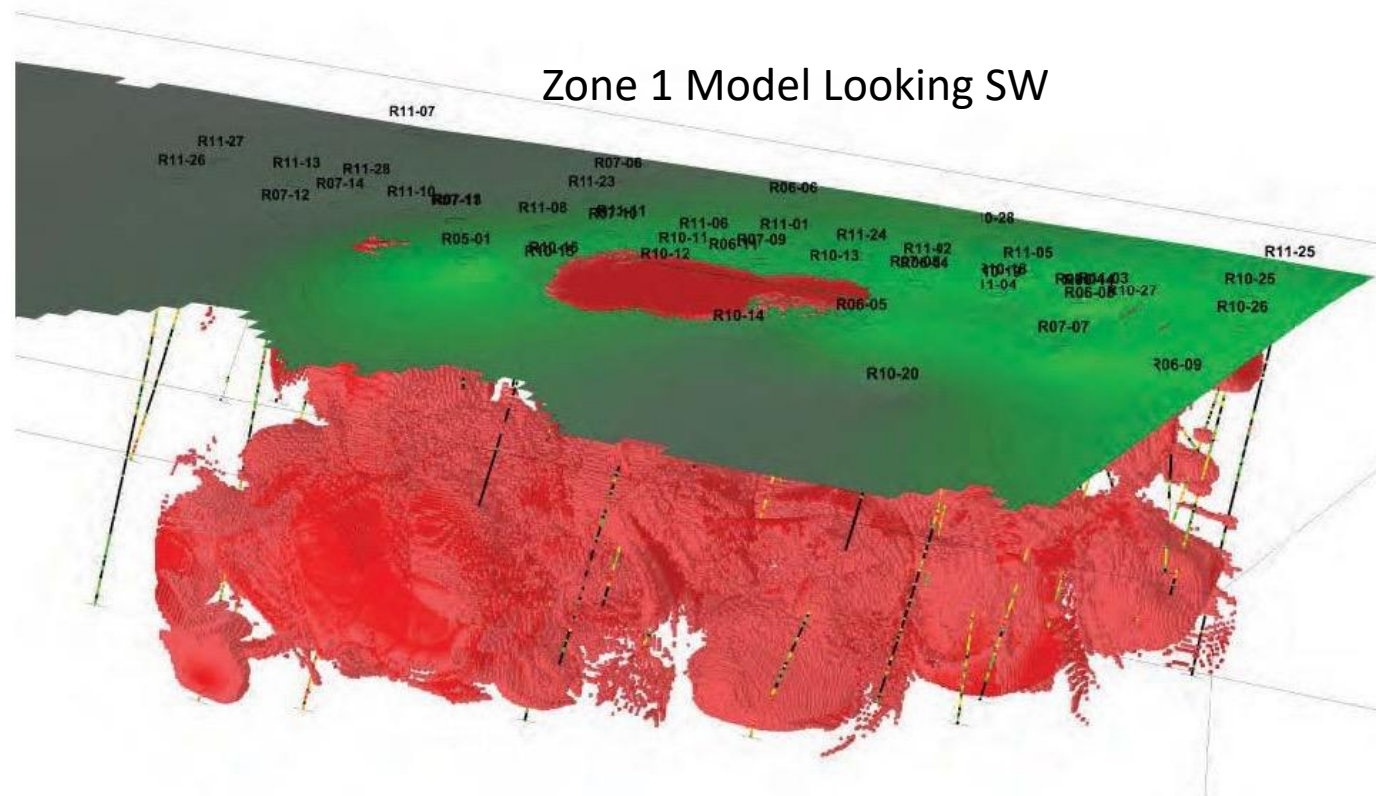
Zone 1 Cu-Ag-Mo Deposit - Zoning



- Near-surface: argillic-phyllitic alteration with mainly chalcocite
- Deeper: quartz-muscovite-K-spar with bornite-chalcocite and moly
- Alteration extends well beyond mineralized zones, suggesting additional discovery potential



Chalcocite-moly mineralization at 423 m, Hole R11-01



Chalcocite with quartz-muscovite-sericite-kaolinite



Bornite with quartz-sericite-muscovite

Zone 2 Cu-Au-Mo-Ag deposit

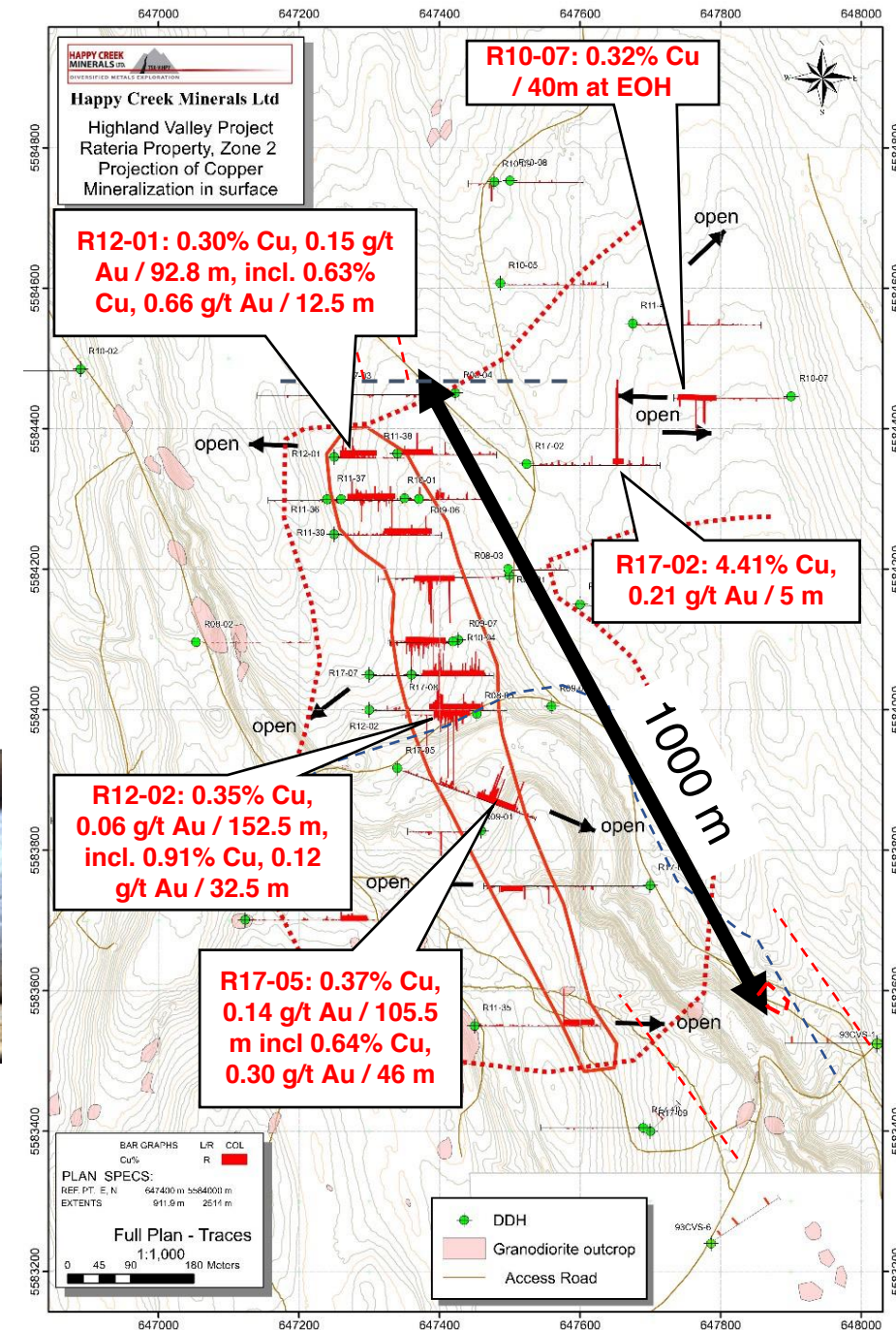


- 2008 discovery by Happy Creek
- Hosted by Bethlehem, Skeena phase granodiorite cut by aplite, qtz-feldspar porphyry dikes
- Quartz, sericite, k-spar alteration
- >1000 m x 100 m x 350 m deep and open in several directions
- Bornite and chalcocite mineralization; low in pyrite
- High-grade zones and locally enriched in gold, silver and moly and rhenium

ZONE 2 DDH Highlights						
Zone 2 Hole	Interval (m)	Cu %	Ag g/t	Mo %	Au g/t	Re g/t
R08-01	113.0	0.33	1.48	0.002	0.05	N/A
R08-05	126.0	0.46	1.71	0.008	0.10	N/A
R09-06	92.4	0.12	1.23	0.011		0.76
includes	20.2	0.18	0.80	0.048	0.04	3.45
R09-07	48.0	0.30	1.60	0.002	0.07	0.26
R12-01	92.81	0.30	1.50	0.005	0.15	0.02
includes	12.5	0.63	3.2	0.001	0.66	0.01
R12-02	152.5	0.35	1.70	0.004	0.06	0.57
includes	32.5	0.91	4.0	0.011	0.12	1.83
R17-02	5.0	4.41	20.0	0.031	0.21	6.86
R17-05	105.5	0.37	1.90	0.005	0.14	0.63
R17-08	82.5	0.29	1.25	0.003	0.06	0.17
and	66.0	0.35	1.64	0.002	0.02	0.23



R17-02 chalcocite veining: Portion of 5.0m grading 4.41% Cu, 20.0 g/t Ag, 0.21 g/t Au, 0.031% Mo, 6.86 g/t Re



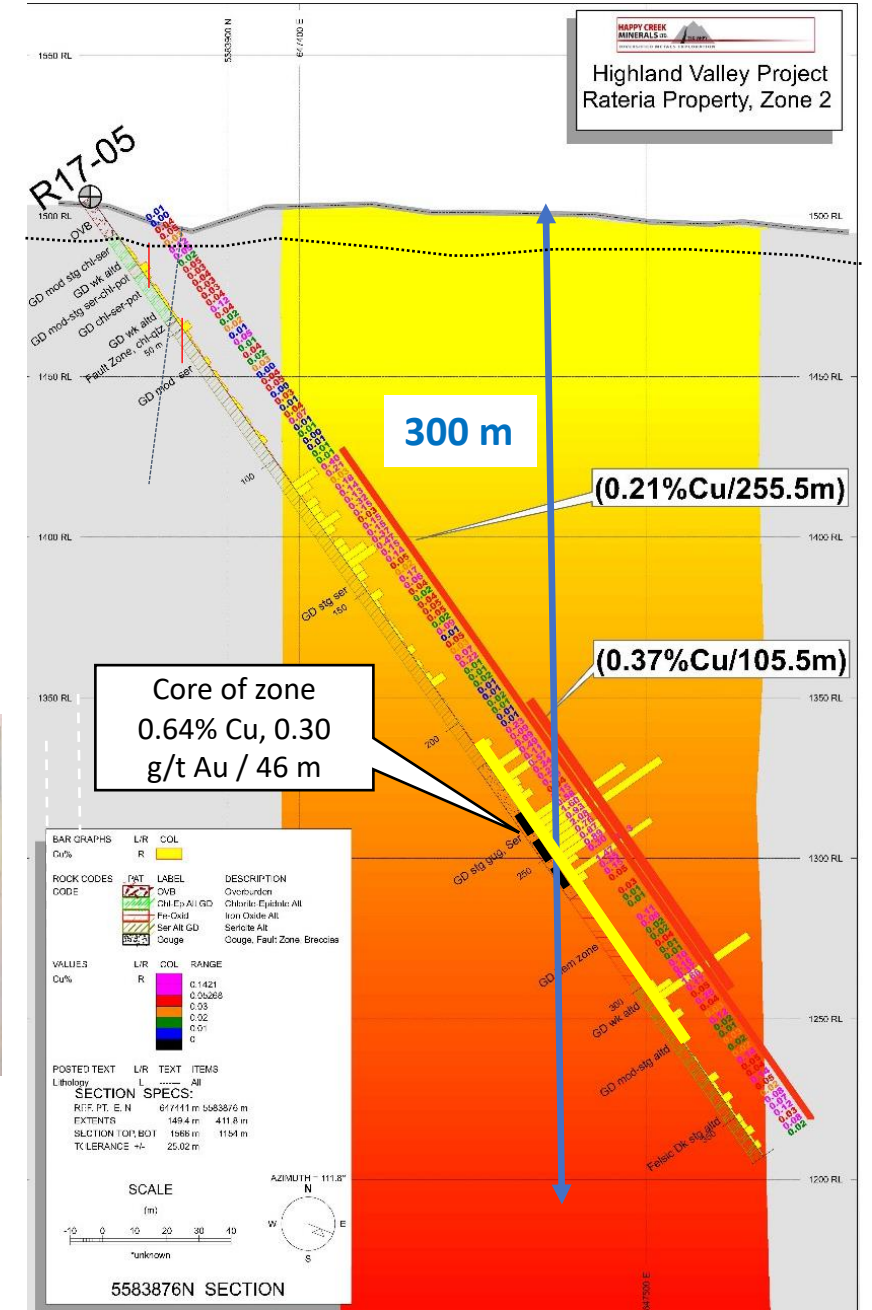
Zone 2 Cu-Au-Mo-Ag deposit

- Broad zone of alteration and mineralization around high-grade, structural zone
- Gold content of Zone 2 is unusual for Highland Valley deposits



R17-05 chalcocite-bornite veins; quartz-sericite-clay alteration.
 Portion of 2.5m @ 0.89% Cu, 0.38 g/t Au, 0.003% Mo, 0.54 g/t Re

Cross-Section Looking North through R17-05

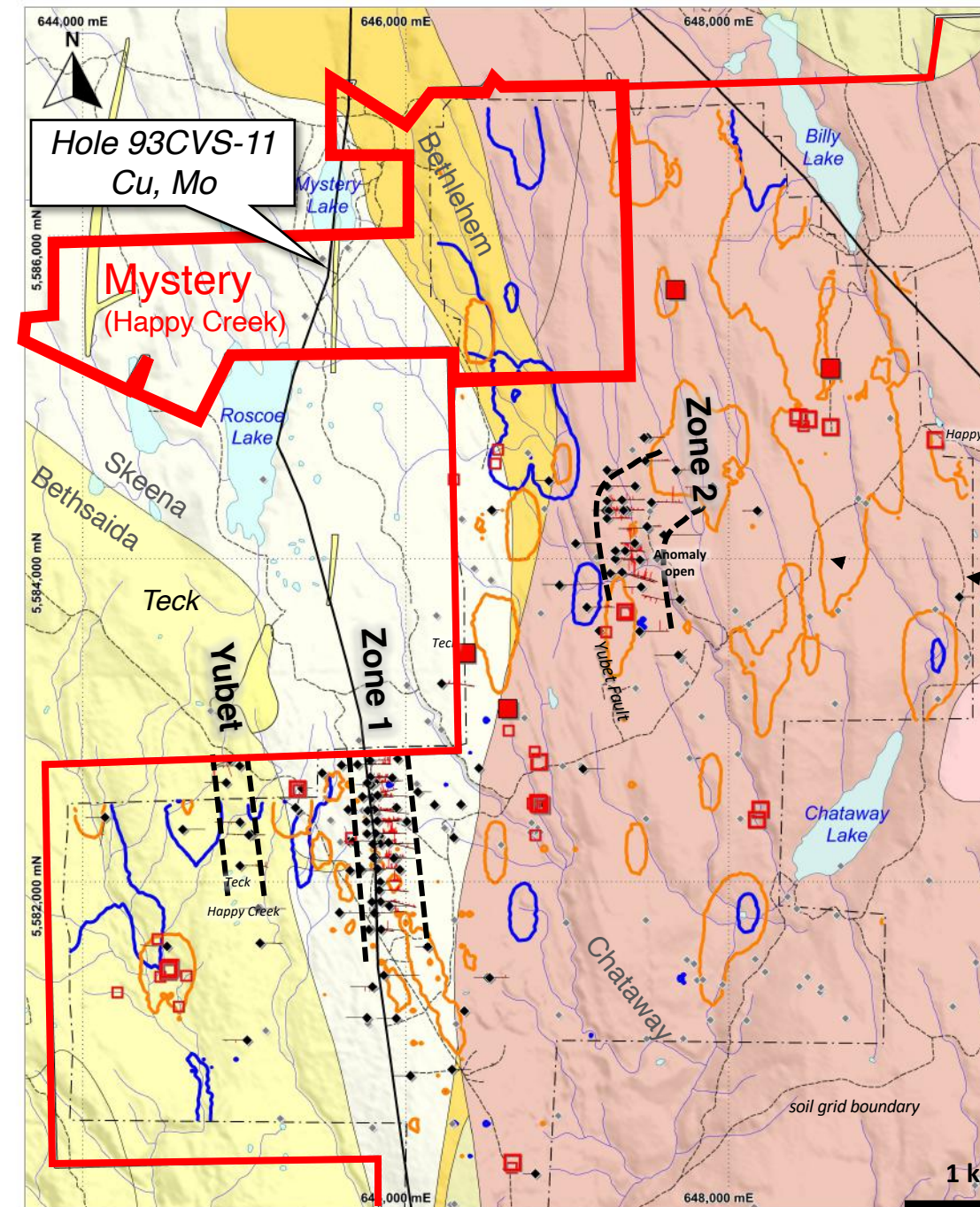


Mystery Property

Acquired December 2021



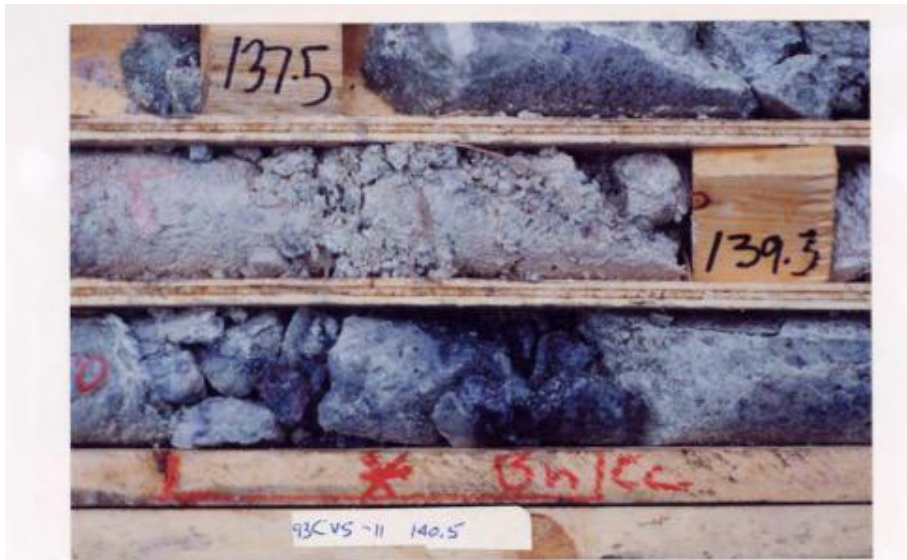
- Key 438 hectare property, on trend with Zone 2
- Underlain by prospective Bethsaida, Skeena, Bethlehem and Chataway phases, and cut by porphyry dikes
- 3 holes by Hudson Bay in 1993 that reported hole 93CVS-11 cut a 230 m width of intense sericite and k-spar alteration with bornite-chalcocite veining:
 - 3 m @ 1.36% Cu, 11.8 g/t Ag
 - 12 m @ 0.27% Cu
 - 21 m @ 0.07% Cu to within 1.5 m of EOH @ 300.5 m)
- Partially sampled and no gold assays
- Strong mag low and deep IP chargeability



Mystery – Hole 93CVS-11



Bornite-chalcocite-quartz veins with sericite-kspars alteration similar to Zone 2



High grade bornite-chalcocite-quartz vein. Note intense, pervasive sericite II alteration in adjacent core rows.

Core photos from Hudson Bay Report by S.G Enns, 1993 (PF804381)



Quartz stockwork zone with bornite-chalcocite-quartz veins. Note sericite II overprint on pink K-spar alteration, which displays specks of martitized magnetite altered to hematite.

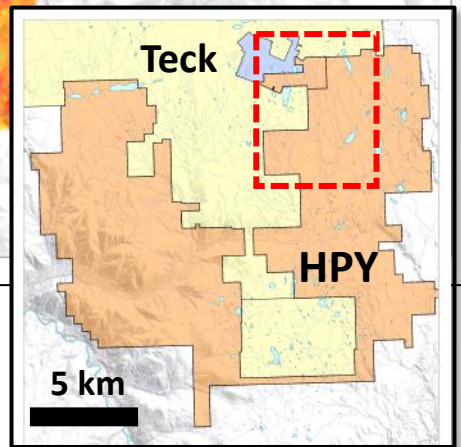
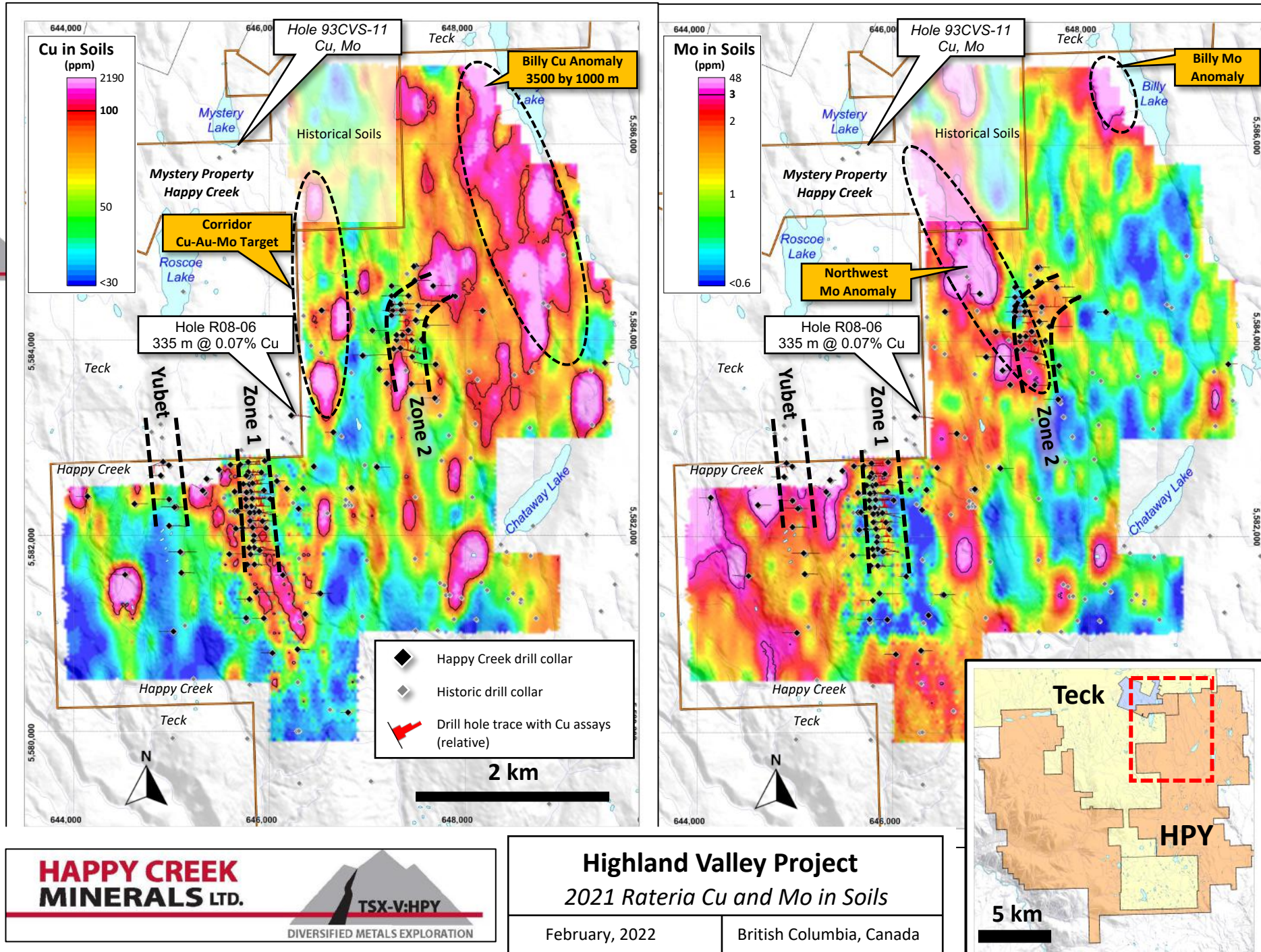


High grade bornite-chalcocite-quartz vein in pervasive sericite II altered quartz diorite.

2021 Soils

Copper (left) and Moly (right)

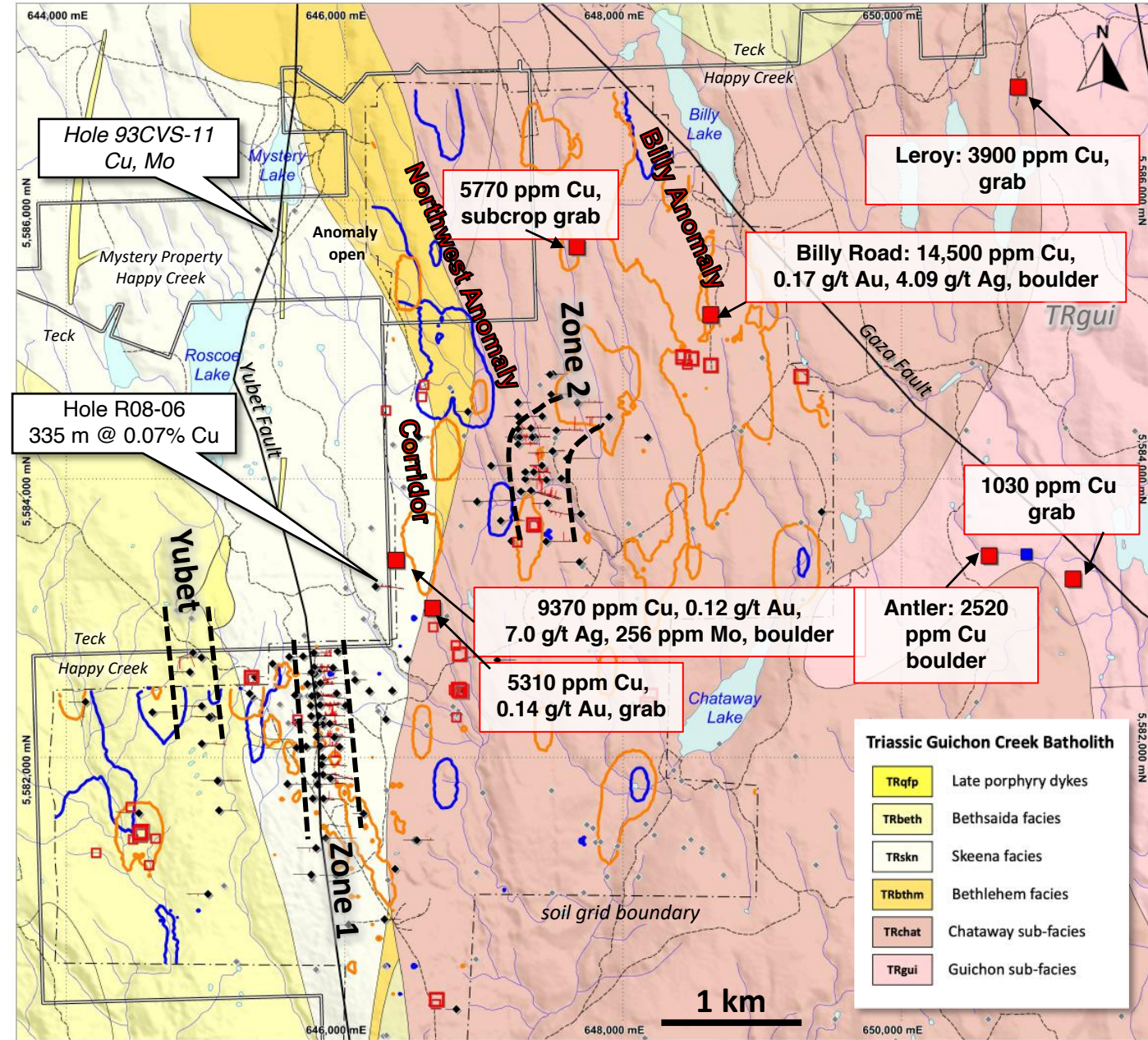
- Several new untested multi-km anomalies with Cu-Mo values stronger than soils at Zones 1 and 2
- Ice-flow to SSE



2021 Prospecting

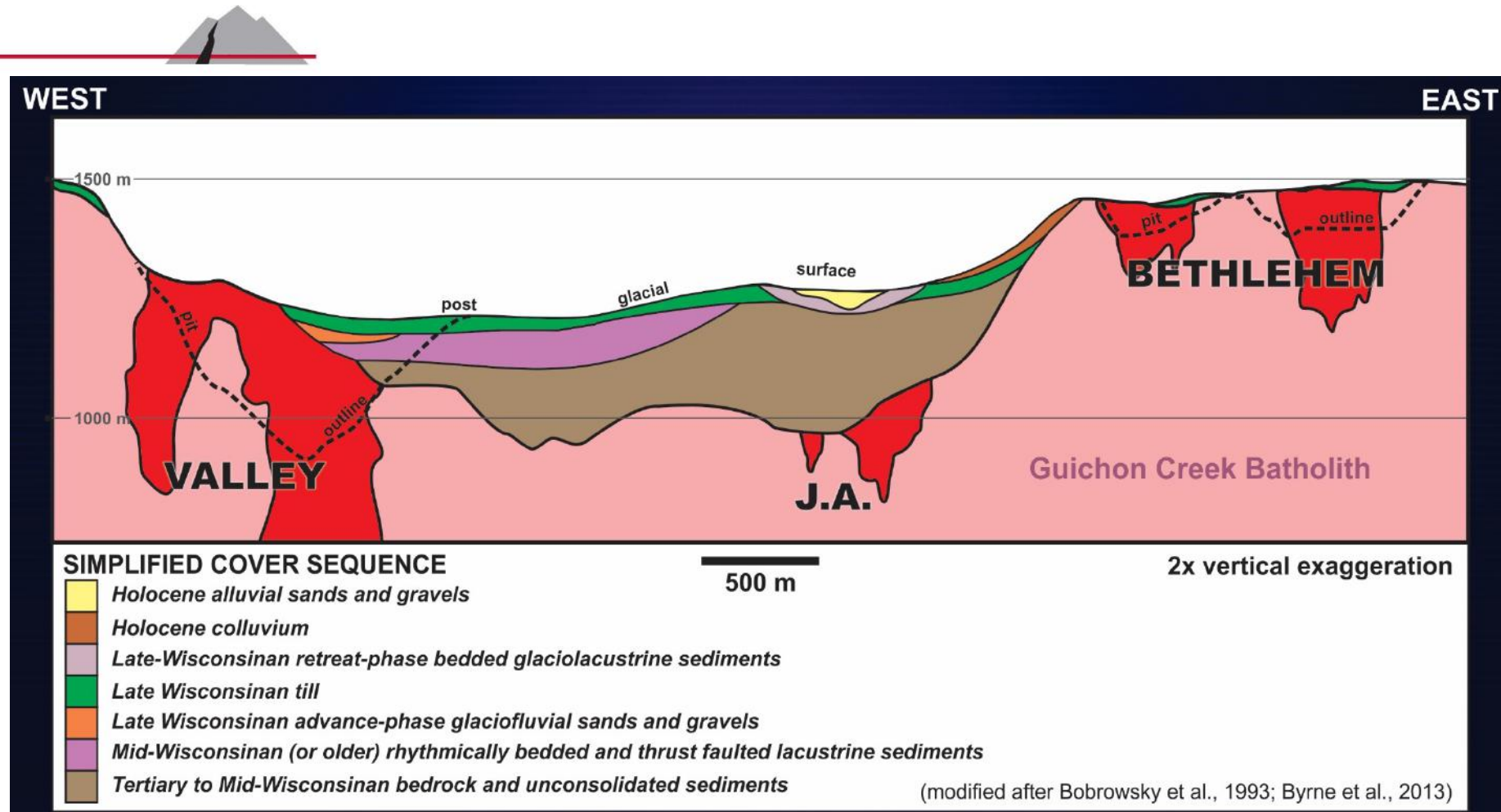


- Exciting new results within 2021 soil anomalies, despite till cover
- 1.45% Cu, 0.7% g/t Au in grab at Billy Road prospect within 3.5 km Billy Cu-in-soil anomaly
- Grabs with 0.93% Cu, 0.12 g/t Au and 0.53% Cu, 0.14% Au within Corridor soil anomaly
- Several others from 0.1% to 0.58% Cu
- More prospecting needed

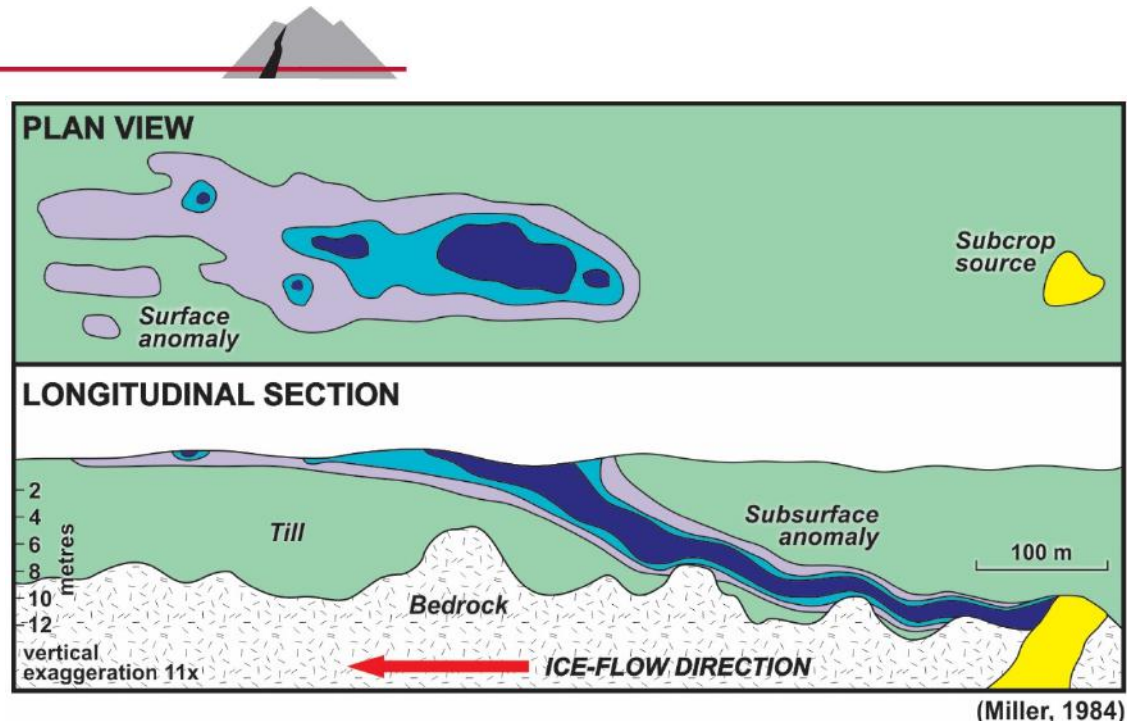


Highland Valley Deposits Under Till Cover

Up to 200 m: thick glaciofluvial, glaciolucustrine in valleys; thinner on plateaus

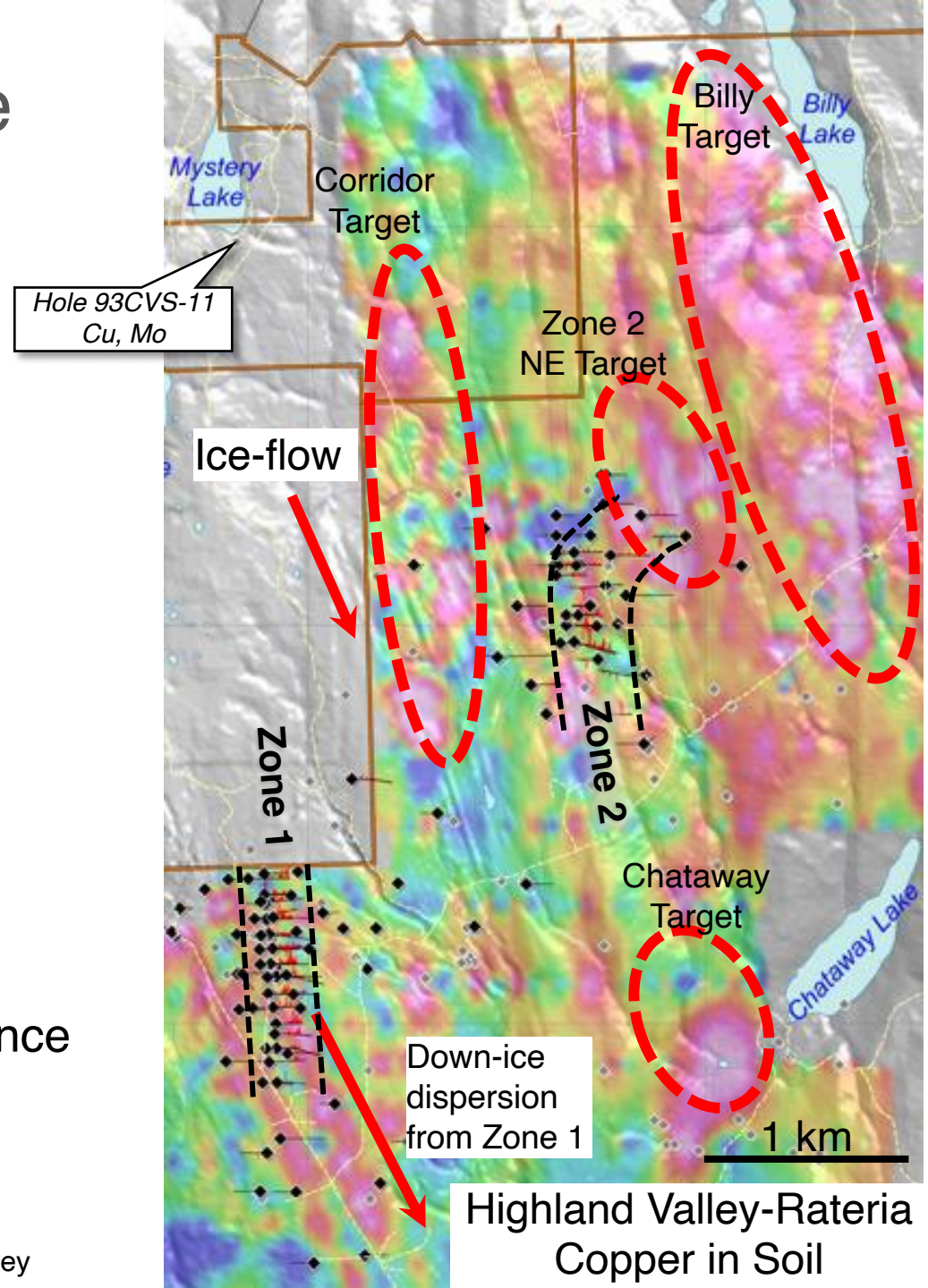


2021 Copper-in-Soil Points to Multiple Large New Targets for Follow-up



Simple model of down-ice transport of an anomaly

- Positives – thinner till, predictable and shorter transport distance to SSE, large and multiple exploration targets.
- Complicated by deposits being nearly parallel with ice-flow



2022 Plans



- **Highland Valley:**
 - Phase 1: Refine drill targets with prospecting, geology, geochem, and geophysics
 - Permits in place; follow-up with archaeology / cultural studies
 - Phase 2: Trenching / drilling in fall 2022
- **Silverboss:** Extend and refine Gus Cu-Pd-Ag-Ni target to drilling stage through prospecting, geochem and geology
- **Fox Tungsten:** Permitting of 5-km trail and multi-year resource drill program

Summary

- Proven, invested team with record of successful discovery, development and mining
- Multiple opportunities to create value
- Targeting giant copper-gold-moly discoveries on 100%-owned properties in mining districts with infrastructure in southern BC
- Several very exciting, large new copper targets to explore
- Permits in place for large drilling projects



Thank you

For more information please contact:

Peter Hughes, President and CEO

info@happycreekminerals.com

www.happycreekminerals.com

